

## 4K AV over IP Quick Setup Guide

Your Encoders (ENCs) and Decoders (DECs) are **pre-configured** to your specification (see attached).

Follow these instructions for a 1, 2, 3 AV over IP experience:

1. Begin with all ENCs and DECs and other network equipment **disconnected** from the AVoIP network switch

2. Configure your Network Switch

- a. We have attached setup instructions for the network switch that you told us you will use. Please see the following pages
- b. If you did not tell us which network switch you will use or have changed network switches, you **MUST** use a switch from our Verified Switches List (QR code)
- c. See pages 4-7 for brands & models. Setup instructions for each follow
- d. If you are stacking network switches, you **must use 10G fiber SFPs**



3. Connect IR Emitters (optional)

- a. Connect the striped wire (IR signal) to pin 1. Connect the solid wire (ground) to pin 2
- b. If you are using KD-App Source & Display Control feature, you **must** use I/O port 1
  - i. If using Compass Control Pro, the programmer specifies the port number
- c. If you are using KD-App Source & Display Control feature with a Video Wall, connect **all** IR emitters into Decoder 1 (top-left ) of the video wall.



4. Install ENCs and DECS

- a. **Do not stack units.** Units **must** have proper ventilation or damage may occur
- b. Ensure that all CAT6 terminations are proper and cables pass 1 Gbps signal
- c. For ENCs, connect HDMI sources to HDMI Input (not the HDMI Pass-through)
- d. For KD-IP922DECS, connect displays to HDMI Output (not the Local HDMI Input)

5. Connect ENCs and DECS into Network Switch and Power ON the Network Switch

- a. **IMPORTANT:** Network Switch must already be configured (step #2 above)
- b. Wait 5-10 minutes for the equipment to bootup

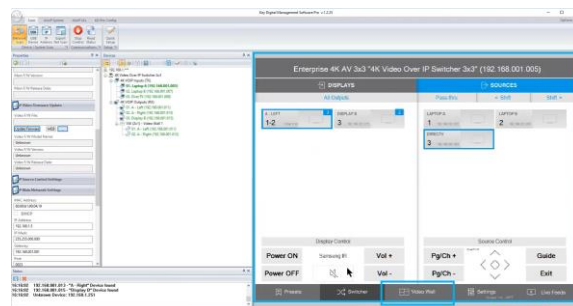
6. Connect Window's PC into Network with ethernet cable

- a. Set a unique static IP address to your PC matching the first 3 octets of the ENCs and DECS
- b. Download KDMS Pro (QR Code) and extract zip file. Open KDMS\_Pro application.
  - i. **IMPORTANT:** Do not remove the application from the folder
- c. Choose SCAN > NETWORK SCAN and KDMS Pro will find your system



7. Control the system using KDMS Pro's control UI section

- a. For HDMI routing, choose the display first, then the desired source
- b. For video wall control, choose the Video Wall button at bottom
- c. **IMPORTANT:** Do not adjust ENC or DEC properties without consulting Technical Support



8. If applicable, you may now add your WiFi router to the network, join the WiFi network from your iPad, download the Key Digital App and control the system.